

**Engineered Systems Associates**  
**Mechanical Engineers**

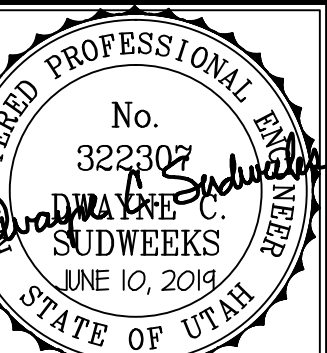
Dwayne Sudweeks  
 1355 East Center - Pocatello, Idaho 83201  
 Phone: (208) 233-0501 Fax: (208) 233-0529 email: esa@engsystems.com

**STRATA CLUBHOUSE**

LOGAN, UTAH

PLUMBING FLOOR PLAN

PROJECT:

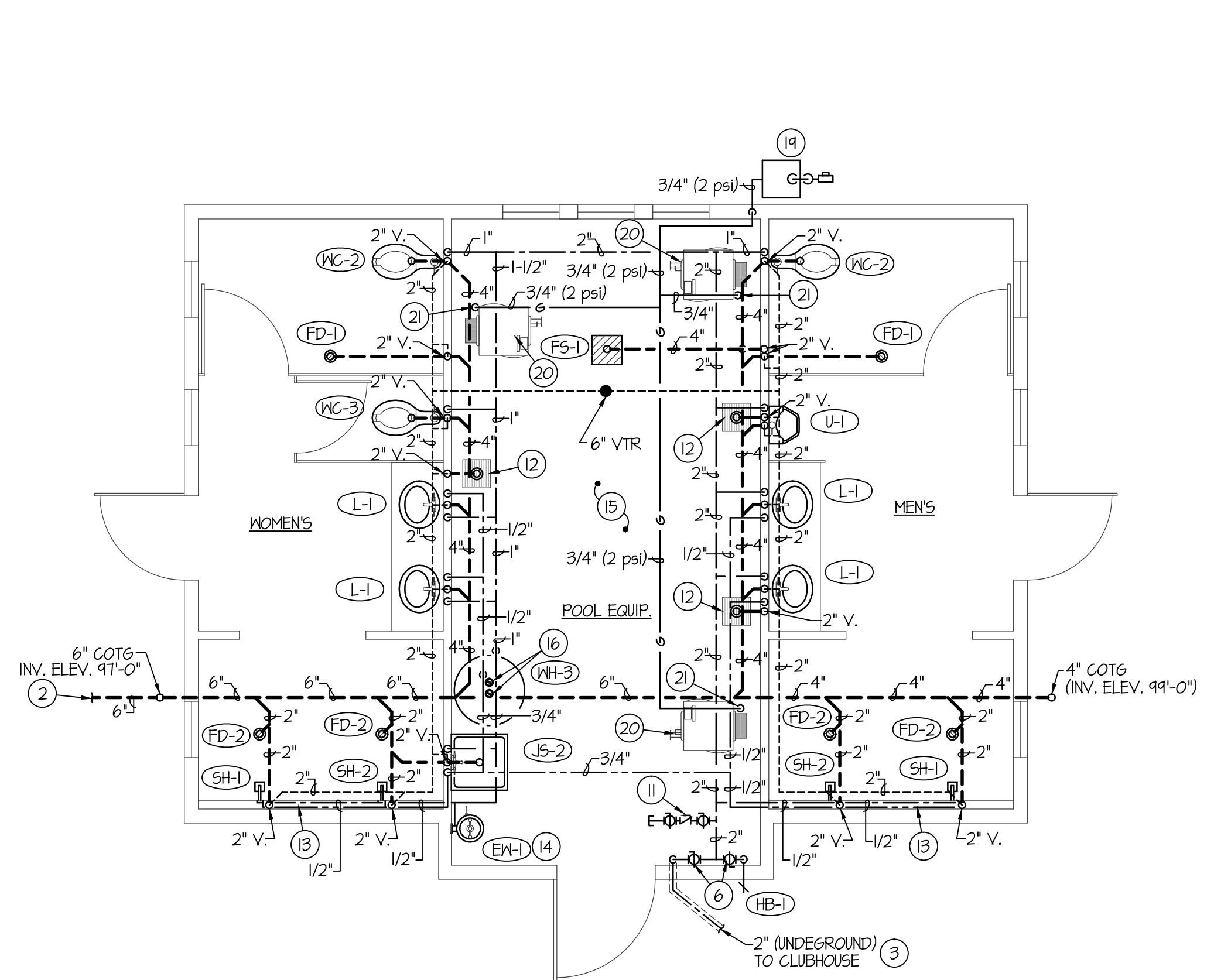


DRWN. BY: SR  
 OJD. BY: DCS  
 JOB NO. 18043  
 DATE: JUNE 2019

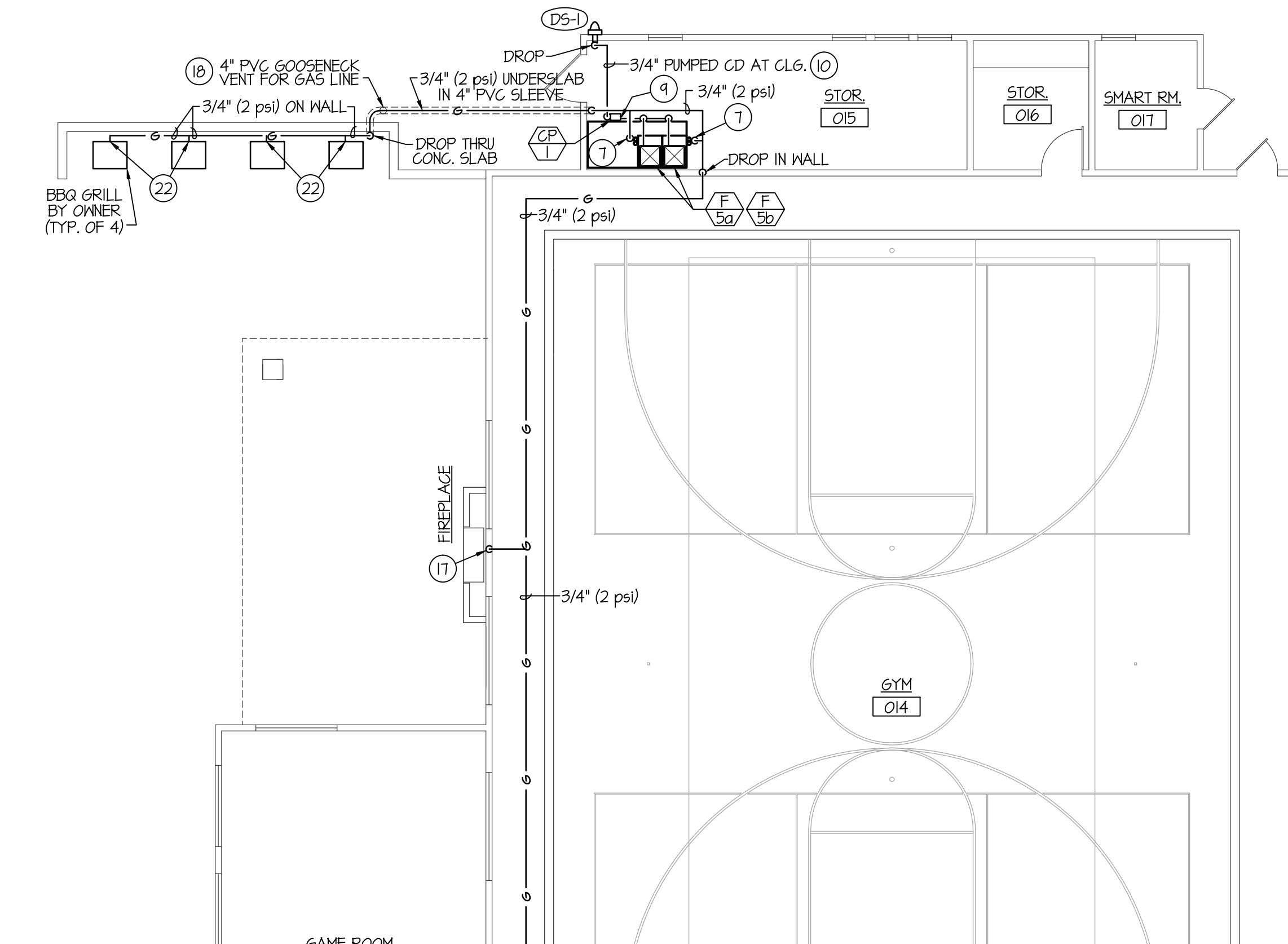
SHEET: 0-1  
 OF: THREE

**PLAN NOTES:**

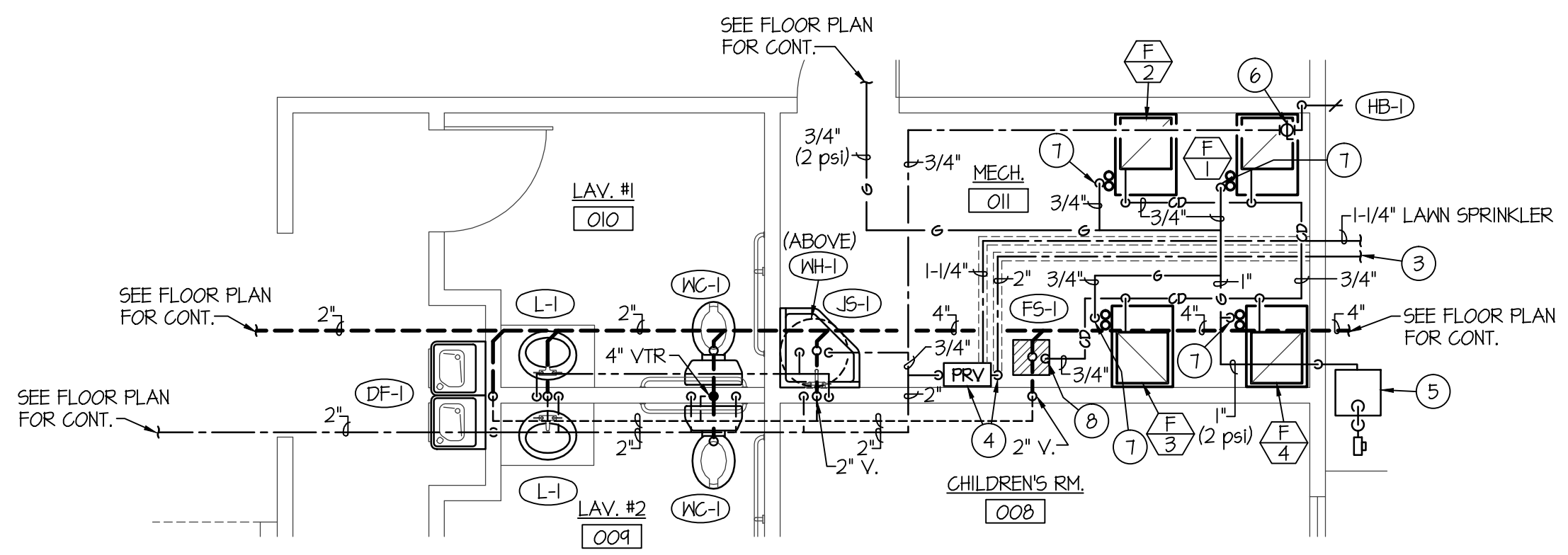
- SEE CIVIL SITE PLAN FOR CONTINUATION OF 4" SANITARY SEWER LINE.
- SEE CIVIL SITE PLAN FOR CONTINUATION OF 6" SANITARY SEWER LINE.
- SEE CIVIL SITE PLAN FOR CONTINUATION OF 2" DOMESTIC CW MAIN.
- RISE 2" CW MAIN UP THRU SLAB TO PRESSURE REDUCING VALVE ASSEMBLY. SEE DETAIL ON SHEET P-2. ALL WATER PIPING LOCATED UNDER SLAB TO BE INSULATED WITH 3/4" ARMAFLEX PIPE INSULATION WITH NO JOINTS ALLOWED UNDERSLAB. SEE DETAIL ON SHEET P-2.
- GAS METER BY LOCAL GAS COMPANY SIZED FOR 922,000 BTU AT 2 PSI DELIVERY PRESSURE.
- BALL TYPE ISOLATION VALVE.
- DROP 3/4" (2 PSI) GAS LINE DOWN TO FURNACE IN MECH. ROOM. INSTALL 2 PSI TO OZ. REGULATOR ON 3/4" GAS LINE SIZED FOR ACTUAL BTU LOAD OF FURNACE SUPPLIED (VENT REGULATOR TO THE EXTERIOR AS REQ'D). CONNECT 3/4" (OZ.) GAS LINE TO FURNACE COMPLETE WITH SHUT-OFF VALVE, DIRT LEG AND FLEXIBLE CONNECTION. SEE DETAIL ON SHEET P-2.
- RUN 3/4" CONDENSATE DRAIN LINE FROM FURNACES AND DX COOLING COILS TO CONDENSATE PUMP ON FLOOR OF MECH. ROOM.
- RUN 3/4" CONDENSATE DRAIN LINE FROM FURNACES AND DX COOLING COIL TO CONDENSATE PUMP ON FLOOR OF MECH. ROOM.
- INSTALL 2" CAPPED CW LINE IN MECH. ROOM FOR POOL EQUIPMENT COMPLETE WITH 2" BACKFLOW PREVENTOR AND ISOLATION BALL VALVE. SEE POOL EQUIPMENT PLANS FOR WATER SERVING POOL EQUIPMENT. SEE DETAIL ON SHEET P-3.
- CONCRETE BACKWASH SUMP (SEE ARCH. PLANS). PLUMBER TO INSTALL 4" DEEP SEAL P-TRAP IN BOTTOM OF SUMP AND RUN TO SANITARY SEWER MAIN SERVING THE POOL HOUSE.
- RUN CW AND HW PIPING LATERALLY IN FURR-OUT SPACE OF WALL. DO NOT RUN WATER PIPING IN EXTERIOR WALL.
- RUN 1/2" CW LINE SERVING EYEWASH EXPOSED ON INTERIOR SIDE OF MECH. ROOM WALL. RUN 1/2" DRAIN INTO FLOOR MOUNTED JANITOR SINK.
- WALL WATER PIPING IN POOL MECH. ROOM TO BE RUN AT CEILING. NO WATER PIPING ALLOWED IN COLD ATTIC SPACE.
- RISE (2) 3" WATER HEATER FLUES UP THRU ROOF TO VERTICAL VENT TERMINATION ASSEMBLY. SEAL ROOF PENETRATION WEATHERTIGHT. SEE DETAIL ON SHEET P-2.
- DROP 3/4" (2 PSI) GAS LINE DOWN TO SERVE OWNER PROVIDED GAS FIRE PLACE. INSTALL 2 PSI TO OZ. REGULATOR SIZED FOR ACTUAL BTU LOAD OF FIREPLACE SUPPLIED AND VENT TO THE EXTERIOR AS REQ'D. CONNECT 3/4" OZ. GAS LINE TO FIREPLACE COMPLETE WITH SHUT-OFF VALVE, FLEXIBLE CONNECTION AND DIRT LEG. SEE DETAIL ON SHEET P-2.
- INSTALL GAS PIPE UNDERSLAB IN 4" PVC SLEEVE VENTED TO GOOSENECK EXTERIOR VENT. SEE DETAIL ON SHEET P-3.
- GAS METER BY LOCAL GAS COMPANY SIZED FOR 1,270,000 BTU AT 2 PSI DELIVERY PRESSURE.
- 400,000 BTU POOL / SPA BOILER (BY POOL EQUIP. CONTRACTOR). SEE POOL EQUIPMENT DWGS.
- DROP 3/4" (2 PSI) GAS LINE DOWN FROM CEILING TO BOILER AND INSTALL 2 PSI TO OZ. REGULATOR ON 3/4" (2 PSI) GAS LINE SIZED FOR ACTUAL BTU LOAD OF BOILER SUPPLIED AND VENT TO THE EXTERIOR. CONNECT 1" (OZ.) GAS LINE TO BOILER COMPLETE WITH SHUT-OFF VALVE, FLEXIBLE CONNECTION AND DIRT LEG. SEE DETAIL ON SHEET P-2.
- INSTALL 2 PSI TO OZ. REGULATOR ON EXPOSED 3/4" GAS LINE MOUNTED ON WALL BEHIND BBQ GRILLS. SIZE REGULATOR TO ACCOMMODATE ALL 4 GRILLS. CONNECT 1/2" OZ. GAS LINE TO EACH GRILL COMPLETE WITH SHUT-OFF VALVE, FLEXIBLE CONNECTION AND DIRT LEG. SEE DETAIL ON SHEET P-2.



**LARGE SCALE POOL HOUSE PLUMBING PLAN**  
 SCALE: 1/4" = 1'-0"  
 North arrow pointing up.



**FLOOR PLAN - PLUMBING**  
 SCALE: 1/8" = 1'-0"  
 North arrow pointing up.



**LARGE SCALE TOILET ROOM PLUMBING PLAN**  
 SCALE: 1/4" = 1'-0"  
 North arrow pointing up.

PLUMBING LEGEND	
SYMBOL	DESCRIPTION
V	VENT
VTR	VENT THRU ROOF
CO	CLEANOUT
WCO	WALL CLEANOUT
COTG	CLEANOUT TO GRADE
—	PIPE DROP
—	PIPE RISE
—	BALL TYPE ISOLATION VALVE
---	SOIL OR WASTE PIPING
---	VENT LINE PIPING
---	SOFT COLD WATER PIPING
---	HARD COLD WATER PIPING
---	DOMESTIC HOT WATER PIPING
---	GAS PIPING
---	CONDENSATE DRAIN PIPING

F:\18043 STRATA CLUBHOUSE\18043 CLUBHOUSE\CLUBHOUSE P-1.dwg Jun 10, 2019 - 1:52pm